

AHP300 Ventilator

Accessories and Consumables

www.AHP300.com



Global Support of Life

Allied
HEALTHCARE PRODUCTS INC.

Circuit Bag and Protective Case

Vent Circuit Bag

Catalog # **AHP300-BAG**

- Dimensions 12" W x 5.5" D x 5" H
- Will securely hold a wrapped 6' J circuit (L599-600) and oxygen hose
- Secures to the ventilator D rings with metal clasps and included 1-1/2" wide hook-and-loop strip that attaches to the top of the ventilator
- Integrated 1/4-sheet protocol pocket on the lid
- Exterior fabric is commercial grade polyester
- PVC back coating is 100% waterproof
- 1" hook-and-loop lid closure



Protective Wrap Case

Catalog # **AHP300-CASE**

- Designed to securely wrap and protect the AHP300 transport ventilator
- Secures to the ventilator with 1/2" Velcro straps
- Lined with 1/4" / 2lb. protective foam for added protection
- Exterior fabric is commercial grade polyester
- PVC back coating is 100% waterproof



Shown with both the circuit bag and protective case

Catalog #s **AHP300-BAG + AHP300-CASE**

(sold separately)

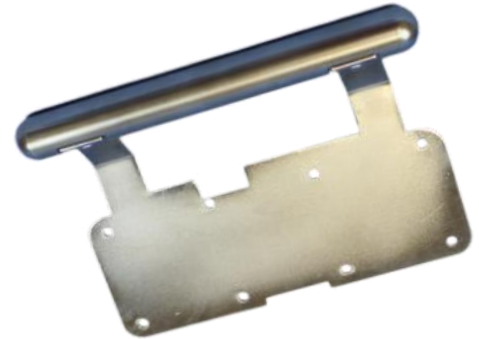


Carrying Handle and Hooks

Carrying Handle

Catalog # **AHP300-HANDLE**

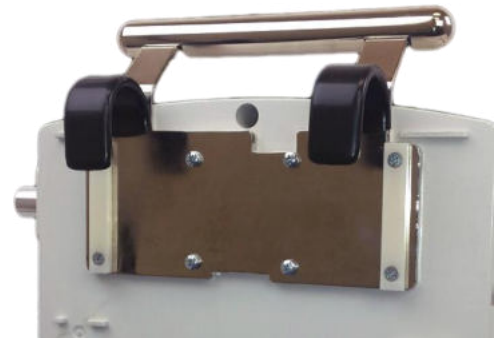
- Sturdy nickel-plated aluminum handle is balanced for easy carrying
- Attaches securely to rear mounting bosses with included mounting hardware
- 1 ½" clearance for gloved hands adds only 2.1" to the top of the ventilator profile
- Weighs only 1.1 lbs.



Carrying Handle with Static Hooks

Catalog # **AHP300-HDLHOOK**

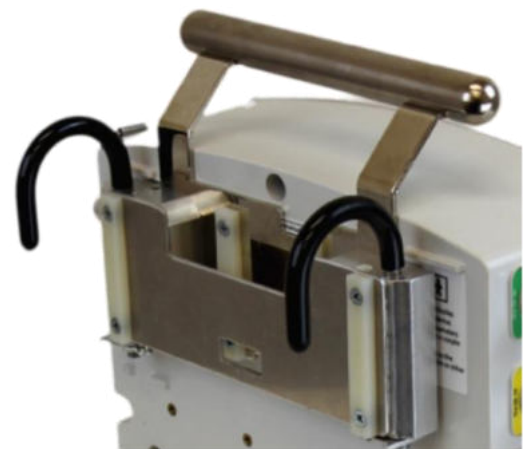
- 1 ½" clearance on static hooks will accommodate all standard cot rails
- PVC-coated hooks and nylon bumpers prevent scratching of the cot
- Kit contains handle, static hook assembly and all mounting hardware



Carrying Handle with Swivel Hooks

Catalog # **AHP300-HASWHO**

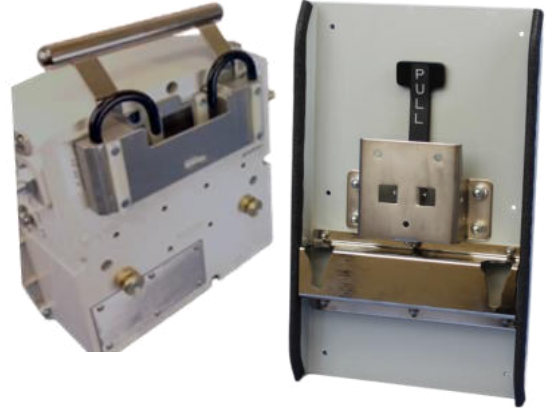
- 1 ½" clearance on swivel hooks will accommodate all standard cot rails
- PVC-coated hooks and nylon bumpers prevent scratching of the cot
- Kit contains handle, swivel hook assembly and all mounting hardware



Wall Mount System

Complete Wall Mount System Catalog # **AHP300-WMSYS**

- Wall mount system has been tested to IEC 60068-2-27 at 20 Gs.
- The combined weight of the AHP300 ventilator and complete wall mount system is 23lbs.
- The Wall Mount System comes complete with:
 1. One back plate made from 1/8" thick aluminum with holes sized for a # 10 threaded *fastener, and comes equipped with a quick release handle.
 2. One nickel plated carrying handle
 3. One PVC coated swivel hook assembly
 4. Two lower mounting retainers



** Refer to Ambulance Manufacturer for proper wall mount fastener type.*

Wall Mount Only Catalog # **AHP300-WM**

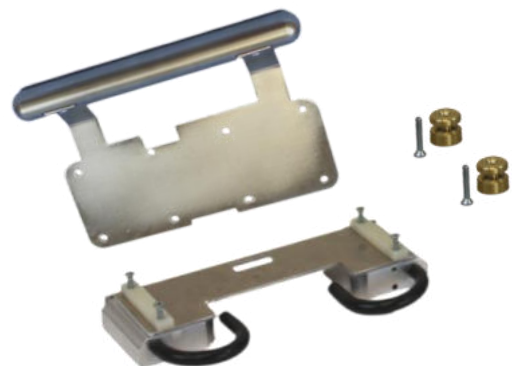
- Wall mount system has been tested to IEC 60068-2-27 at 20 Gs.
- The combined weight of the AHP300 ventilator and complete wall mount system is 23lbs.
- The back plate of the wall mount is made from 1/8" thick aluminum with holes sized for a # 10 threaded *fastener, and comes equipped with a quick release handle.



** Refer to Ambulance Manufacturer for proper wall mount fastener type.*

Wall Mount Hardware Only Catalog # **AHP300-WMH**

- Hardware Only Kit comes with:
 1. One nickel plated handle assembly
 2. One PVC coated swivel hook assembly
 3. Two lower mounting retainers



Roll Stand System

Complete Roll Stand System Catalog # **AHP300-RS**

- Ventilator drops in and locks securely to stand
- Comes with basket, pole-mounted handle and ventilator handle
- 2" offset aluminum pole and counterbalanced base for added stability
- Ventilator angle is fully adjustable
- 3" casters (two locking) for easy rolling
- 49" H x 16" W x 24" D



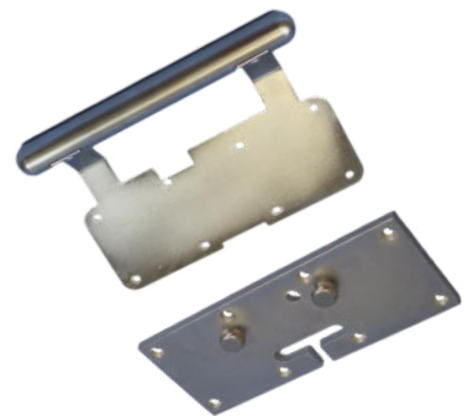
Roll Stand Only Catalog # **AHP-STAND**

- 2" offset aluminum pole and counterbalanced base for added stability
- Comes with basket and pole-mounted handle
- 3" casters (two locking) for easy rolling
- 49" H x 16" W x 24" D



Stand Mount **Hardware Only** Catalog # **AHP300-RSMPH**

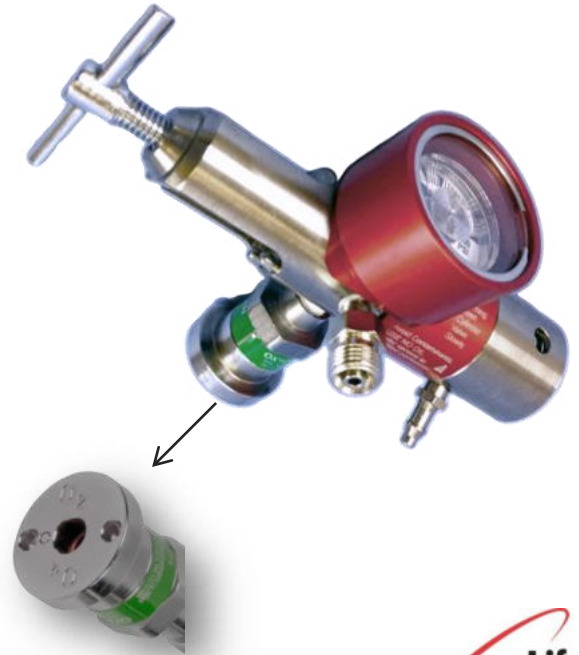
- Sturdy nickel-plated aluminum handle is balanced for easy carrying
- Handle attaches securely to rear mounting bosses with included mounting hardware
- Sturdy nickel-plated aluminum stand mount attaches securely to the rear mounting bosses with included mounting hardware



Quick Connect Regulators

LSP Rhino™ Oxygen Regulator with Ohmeda® Style Quick Connect O₂ Coupler Catalog # L370-221-A

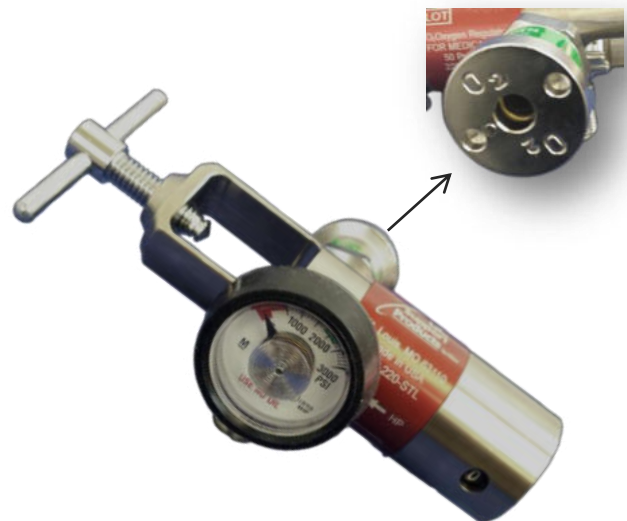
- All-brass uni-body construction designed to strengthen the regulator, prevent yoke damage and protect the flow selector knob from accidental adjustment
- The Rhino regulator has a unique integrated aluminum shroud and lens cover that shelters the gauge from breakage and contamination making it virtually unbreakable
- CGA 870 Regulator
- Supply Pressure: 500 to 2200 psi
- Outlet Pressure: 40 to 60 psi @ 500 to 2200 psi inlet pressure
- Constant Flow Outlet Selections: 0-25 lpm
0, .5, 1, 2, 4, 6, 8, 10, 12, 15, 20, & 25
- Safety Relief Pressure: 75 – 125 psi
- 10 year warranty
- Comes equipped with an Ohmeda® Style Quick Connect Oxygen Coupler



**Life
Support
Products**
by Allied

LSP Oxygen Regulator with Ohmeda® Style Quick Connect O₂ Coupler Catalog # L270-221

- All-brass uni-body construction designed to strengthen the regulator, prevent yoke damage and protect the flow selector knob from accidental adjustment.
- CGA 870 Regulator
- Supply Pressure: 500 to 2200 psi
- Outlet Pressure: 40 to 60 psi @ 500 to 2200 psi inlet pressure
- Constant Flow Outlet Selections: 0-25 lpm
0, .5, 1, 2, 4, 6, 8, 10, 12, 15, 20, & 25
- Safety Relief Pressure: 75 – 125 psi
- 5 year warranty
- Comes equipped with an Ohmeda® Style Quick Connect Oxygen Coupler



**Life
Support
Products**
by Allied

Quick Connect Regulators

Spectrum Oxygen Regulator with Ohmeda® Style Quick Connect O₂ Coupler Catalog # 32-29-2551

- Nickel plated brass, uni-body construction designed to strengthen the regulator and prevent breakage
- Compact 1 ½" diameter low-profile contents gauge and gauge protector
- Sure grip dial-in flow knob for ease of flow rate selection
- CGA 870 Regulator
- Supply Pressure: 500 to 2200 psi
- Outlet Pressure: 40 to 60 psi @ 500 to 2200 psi inlet pressure
- Constant Flow Outlet Selections: 0-25 lpm
0, 1, 2, 4, 6, 8, 10, 12, 15, 18, 20, & 25
- Safety Relief Pressure: 75 – 125 psi
- 2 year warranty
- Comes equipped with an Ohmeda® Style Quick Connect Oxygen Coupler



B&F Oxygen Regulator with Ohmeda® Style Quick Connect O₂ Coupler Catalog # 21225

- Nickel plated brass, uni-body construction designed to strengthen the regulator and prevent breakage
- Compact 1 ½" diameter low-profile contents gauge and gauge protector
- Sure grip dial-in flow knob for ease of flow rate selection
- CGA 870 Regulator
- Supply Pressure: 500 to 2200 psi
- Outlet Pressure: 40 to 60 psi @ 500 to 2200 psi inlet pressure
- Constant Flow Outlet Selections: 0-25 lpm
0, 1, 2, 4, 6, 8, 10, 12, 15, 18, 20, & 25
- Safety Relief Pressure: 75 – 140 psi
- 1 year warranty
- Comes equipped with an Ohmeda® Style Quick Connect Oxygen Coupler



Quick Connect Hose Assemblies

6ft Oxygen Hose with Ohmeda® Style Quick Connect Adapter & DISS O₂ Catalog # **15-10-3204**

- 6 feet of Conductive Neoprene Hose
- UL Listed
- NFPA Complaint
- Fittings are permanently affixed to the hose with crimp-on ferrules
- DISS Oxygen Connector
- Comes equipped with an Ohmeda® Style Quick Connect Oxygen Adapter



1ft Oxygen Hose with Ohmeda® Style Quick Connect Coupler & DISS O₂ Catalog # **15-10-0603**

- 1 foot of Conductive Neoprene Hose
- UL Listed
- NFPA Complaint
- Fittings are permanently affixed to the hose with crimp-on ferrules
- DISS Oxygen Connector
- Comes equipped with an Ohmeda® Style Quick Connect Oxygen Coupler



Quick Connect Hose Assemblies

6ft Oxygen Hose with Chemetron® Style Quick Connect Adapter & DISS O₂ Catalog # 15-10-2204

- 6 feet of Conductive Neoprene Hose
- UL Listed
- NFPA Complaint
- Fittings are permanently affixed to the hose with crimp-on ferrules
- DISS Oxygen Connector
- Comes equipped with a Chemetron® Style Quick Connect Oxygen Adapter



1ft Oxygen Hose with Chemetron® Style Quick Connect Coupler & DISS O₂ Catalog # 15-10-0503

- 1 foot of Conductive Neoprene Hose
- UL Listed
- NFPA Complaint
- Fittings are permanently affixed to the hose with crimp-on ferrules
- DISS Oxygen Connector
- Comes equipped with a Chemetron® Style Quick Connect Oxygen Coupler



Accessories & Consumables

Allied's disposable ventilator circuits and consumable accessories are designed to be compatible with a wide range of ventilators and CPAP machines. All circuits and circuit accessories are Latex free.

Mechanical Test Lung

Catalog # **31-21-3271**

- Standard 15mm connector
- Latex free silicone bag with re-usable flaps
- Autoclavable
- Resistance: 17.7 cm H₂O /0.5L /sec.
- Compliance: 26 ml / cmH₂O at 600ml tidal volume.



Adult Single Limb Patient Ventilator Circuit

Catalog # **L599-600**

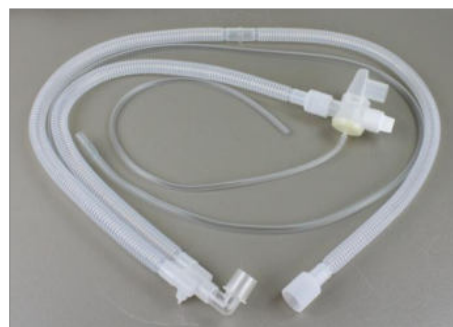
- Universal J type circuit (non-heated)
- For use with Allied AHP300, Life Products® LP4, LP5, Aequitron® LP6, LP6 PLUS, LP10, PLV-100 and PLV-102, Nellcor Puritan-Bennett® Achieva® and Covidien® /Newport® HT50 and HT70 Ventilators
- 6-foot circuit length, with 22 mm ventilator connection and 22 mm corrugated tubing
- Exhalation Supply Line (0.137" I.D.) and Pressure Sensing Line (0.200" I.D.) with Tip Adapter
- 64 ml dead space
- 10 per case



Pediatric Single Limb Patient Ventilator Circuit

Catalog # **L599-650**

- 4-foot circuit length ,with 22 mm I.D. ventilator connection and 15 mm corrugated tubing.
- Exhalation Supply Line (0.137" I.D.) and Pressure Sensing Line (0.200" I.D.) with Tip Adapter
- 9.2 ml dead space
- 20 per case



Accessories & Consumables

Bacterial Exhalation Filter

Catalog # **64020**

- For use in-line or at patient end
- Bacterial/viral filter efficiency: >99.99%
- Low resistance to flow, 1.6 cm H₂O @ 60 lpm
- Compressible volume of 66.3 ml
- Tapered connections per ISO5356-1: 2004
- Breathing system side: 22 mm I.D.
- Patient side 22 mm: O.D. and 15 mm, I.D.
- 50/case (individually wrapped)



Disposable Cuffed Mask

Catalog # **L595161-10 Adult (Size #5)**

Catalog # **L595162-10 Child (Size #3)**

- 22mm I.D. inlet ensures compatibility with any ventilator circuit or BVM
- Sealed gas-filled pillow for patient comfort and leak-free seal
- 10 per case



L595161-10
Adult (Size #5)



L595162-10
Child (Size #3)



Mask Restraint System

Catalog # **890113**

- Used in conjunction with the L595161 and L595162 masks to maintain a continuous hands-free mask seal
- Fully adjustable for any patient size and compatible with child and adult cuffed masks
- 12 per case





Allied Healthcare Products, Inc. ▪ 1720 Sublette Avenue ▪ St. Louis, MO 63110 USA
314-771-2400 ▪ 800-444-3954 ▪ FAX: 314-771-0650 ▪ www.alliedhpi.com

U.S.
Toll Free: 800-444-3940
FAX: 800-477-7701

Canada & Mexico
Toll Free: 800-446-0552
FAX: 800-246-6201

International
Telephone: 314-268-1683
FAX: 314-771-5183

ISO 13485: 2003

©Allied Healthcare Products, Inc.®

All specifications are nominal and
subject to change without notice.

Form 96-00-0005 Rev. 11/15